

ARCHITECTURE  
PLANNING  
INTERIOR DESIGN

115 TWENTY-SECOND STREET  
NEWPORT BEACH CALIFORNIA 92663  
TELEPHONE: 949 / 675-6442  
FAX: 949 / 675-4543

CONSULTANT  
**ALLEN DESIGNS**  
CONSULTING STRUCTURAL ENGINEERS  
91878 Del Obispo Suite 118-#53  
San Juan Capistrano, CA 92675-3224  
V (949) 248-8588  
F (949) 208-2508  
© 2005, ALLEN DESIGNS  
(STRUCTURAL DESIGN)

SEALS / APPROVALS



PROJECT TITLE  
**RUBIDOUX FAMILY CARE CLINIC**  
MISSION BLVD.  
RUBIDOUX, CALIFORNIA

REVISIONS

100% DESIGN DEVELOPMENT	08/05/2005
100% CONSTRUCTION DOCUMENTS	09/21/2005
CONSTRUCTION SET REVISION	12/08/2005
MECHANICAL/STRUCTURAL COORDINATION	01/13/2006
CONSTRUCTION SET REVISION	02/16/2006
CONSTRUCTION SET REVISION	02/21/2006

ALLEN DESIGNS / PROJECT NO. 20411

DATE MAY 23, 2005

DRAWN BY BA

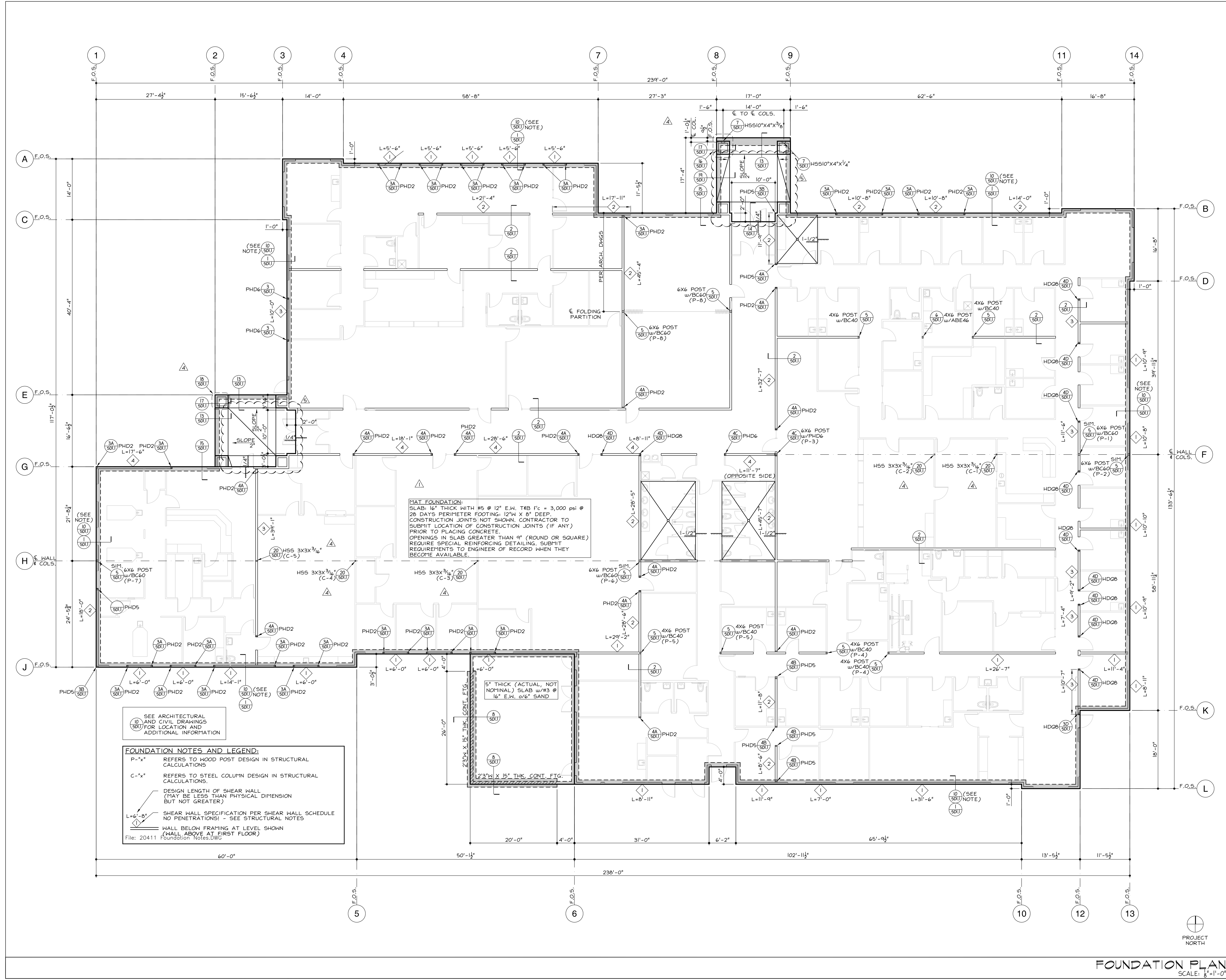
ENGINEER TNA  
THE STRUCTURAL DESIGN DEPICTED HEREIN IS THE PROPERTY & COPYRIGHT OF ALLEN DESIGNS AND SHALL NOT BE USED ON ANY OTHER PROJECT OR LOCATIONS EXCEPT AS DESCRIBED ON THE DRAWINGS WITHOUT WRITTEN AGREEMENT WITH ALLEN DESIGNS.  
© ALLEN DESIGNS 2005

FOUNDATION PLAN

SHEET NUMBER

**S1.1**

CONSTRUCTION SET



SEE ARCHITECTURAL AND CIVIL DRAWINGS FOR LOCATION AND ADDITIONAL INFORMATION

**FOUNDATION NOTES AND LEGEND:**  
 P-<sup>x</sup> REFERS TO WOOD POST DESIGN IN STRUCTURAL CALCULATIONS  
 C-<sup>x</sup> REFERS TO STEEL COLUMN DESIGN IN STRUCTURAL CALCULATIONS  
 DESIGN LENGTH OF SHEAR WALL (MAY BE LESS THAN PHYSICAL DIMENSION BUT NOT GREATER)  
 SHEAR WALL SPECIFICATION PER SHEAR WALL SCHEDULE NO PENETRATIONS! - SEE STRUCTURAL NOTES  
 WALL BELOW FRAMING AT LEVEL SHOWN (WALL ABOVE AT FIRST FLOOR)  
 File: 20411 Foundation Notes.DWG

FOUNDATION PLAN  
SCALE: 1/8"=1'-0"

